

▶ L7FBE48SC

EN **User Manual**  
Washing Machine

# USER MANUAL



**AEG**

## CONTENTS

1. SAFETY INFORMATION.....	3
2. SAFETY INSTRUCTIONS.....	4
3. INSTALLATION.....	5
4. PRODUCT DESCRIPTION.....	9
5. CONTROL PANEL.....	11
6. KNOB AND BUTTONS.....	13
7. PROGRAMMES .....	15
8. SETTINGS.....	20
9. BEFORE FIRST USE.....	20
10. DAILY USE.....	21
11. HINTS AND TIPS.....	25
12. CARE AND CLEANING.....	27
13. TROUBLESHOOTING.....	31
14. CONSUMPTION VALUES.....	35
15. TECHNICAL DATA.....	35
16. ACCESSORIES.....	36

## FOR PERFECT RESULTS

Thank you for choosing this AEG product. We have created it to give you impeccable performance for many years, with innovative technologies that help make life simpler features you might not find on ordinary appliances. Please spend a few minutes reading to get the very best from it.

Visit our website for:



Get usage advice, brochures, trouble shooter, service information:  
**[www.aeg.com/webselfservice](http://www.aeg.com/webselfservice)**



Register your product for better service:  
**[www.registreaeg.com](http://www.registreaeg.com)**




Buy Accessories, Consumables and Original spare parts for your appliance:  
**[www.aeg.com/shop](http://www.aeg.com/shop)**


## CUSTOMER CARE AND SERVICE

Always use original spare parts.

When contacting our Authorised Service Centre, ensure that you have the following data available: Model, PNC, Serial Number.

The information can be found on the rating plate.

 Warning / Caution-Safety information

 General information and tips

 Environmental information

Subject to change without notice.

## 1. SAFETY INFORMATION

Before the installation and use of the appliance, carefully read the supplied instructions. The manufacturer is not responsible for any injuries or damages that are the result of incorrect installation or usage. Always keep the instructions in a safe and accessible location for future reference.

### 1.1 Children and vulnerable people safety

- This appliance can be used by children aged from 8 years and above and persons with reduced physical, sensory or mental capabilities or lack of experience and knowledge if they have been given supervision or instruction concerning the use of the appliance in a safe way and understand the hazards involved.
- Do not let children play with the appliance.
- Children aged 3 years and under must be kept away from this appliance when it is in operation at all times.
- Keep all packaging away from children and dispose of it appropriately.
- Keep detergents away from children.
- Keep children and pets away from the appliance door when it is open.
- Children shall not carry out cleaning and user maintenance of the appliance without supervision.

### 1.2 General Safety

- Do not change the specification of this appliance.
- Do not exceed the maximum load of 8 kg (refer to the "Programme chart" chapter).
- The operating water pressure at the water entry point from the outlet connection must be between 0.5 bar (0.05 MPa) and 8 bar (0.8 MPa).
- The ventilation opening in the base (if applicable) must not be covered by a carpet, mat, or any floor covering.

- The appliance must be connected to the water mains using the new supplied hose sets, or other new hose sets supplied by the Authorised Service Centre.
- Old hose sets must not be reused.
- If the mains power supply cable is damaged, it must be replaced by the manufacturer, its Authorised Service Centre or similarly qualified persons to avoid an electrical hazard.
- Before any maintenance operation, deactivate the appliance and disconnect the mains plug from the socket.
- Do not use high pressure water sprays and/or steam to clean the appliance.
- Clean the appliance with a moist cloth. Use only neutral detergents. Do not use abrasive products, abrasive cleaning pads, solvents or metal objects.

## 2. SAFETY INSTRUCTIONS

### 2.1 Installation

- Remove all the packaging and the transit bolts.
- Keep the transit bolts in a safe place. If the appliance is to be moved in future they must be reattached to lock the drum to prevent internal damage.
- Always take care when moving the appliance as it is heavy. Always use safety gloves and enclosed footwear.
- Do not install or use a damaged appliance.
- Follow the installation instruction supplied with the appliance.
- Do not install or use the appliance where the temperature can be less than 0°C or where it is exposed to the weather.
- The floor area where the appliance is to be installed must be flat, stable, heat resistant and clean.
- Make sure that there is air circulation between the appliance and the floor.
- Adjust the feet to have the necessary space between the appliance and the flooring.

- Do not install the appliance where the appliance door cannot be fully opened.
- Do not put a container to collect possible water leakage under the appliance. Contact the Authorised Service Centre to ensure which accessories can be used.

### 2.2 Electrical connection

- The appliance must be earthed.
- Always use a correctly installed shockproof socket.
- Make sure that the electrical information on the rating plate agrees with the power supply. If not, contact an electrician.
- Do not use multi-plug adapters and extension cables.
- Make sure not to cause damage to the mains plug and to the mains cable. Should the mains cable need to be replaced, this must be carried out by our Authorised Service Centre.
- Connect the mains plug to the mains socket only at the end of the installation. Make sure that there is

access to the mains plug after the installation.

- Do not touch the mains cable or the mains plug with wet hands.
- Do not pull the mains cable to disconnect the appliance. Always pull the mains plug.
- This appliance complies with the E.E.C. Directives.

## 2.3 Water connection

- Do not cause damage to the water hoses.
- Before connection to new pipes, pipes not used for a long time, where repair work has been carried out or new devices fitted (water meters, etc.), let the water flow until it is clean and clear.
- Ensure that there are no visible water leaks during and after the first use of the appliance.

## 2.4 Use



### WARNING!

Risk of injury, electrical shock, fire, burns or damage to the appliance.

- This appliance is for household use only.
- Follow the safety instructions on the detergent packaging.

- Do not put flammable products or items that are wet with flammable products in, near or on the appliance.
- Make sure that all metal objects are removed from the laundry.
- Do not touch the glass door while a programme is in operation. The glass can get hot.

## 2.5 Service

- To repair the appliance contact an Authorised Service Centre.
- Use original spare parts only.

## 2.6 Disposal



### WARNING!

Risk of injury or suffocation.

- Disconnect the appliance from the mains electrical and water supplies.
- Cut off the mains electrical cable close to the appliance and dispose of it.
- Remove the door catch to prevent children or pets from becoming trapped in the drum.
- Dispose of the appliance in accordance with local requirements for the disposal of Waste Electrical and Electronic Equipment (WEEE).

# 3. INSTALLATION



### WARNING!

Refer to Safety chapters.

## 3.1 Unpacking



### WARNING!

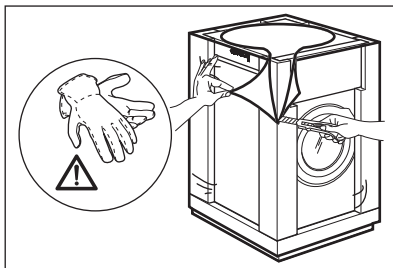
Remove all the packaging and the transit bolts before installing the appliance.



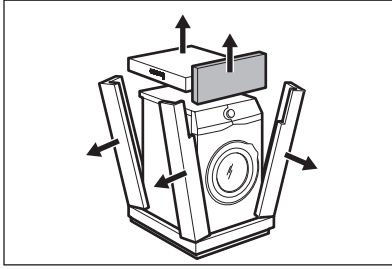
### WARNING!

Use the gloves.

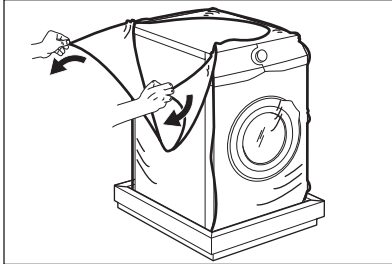
1. Remove the external film. If necessary, use a cutter.



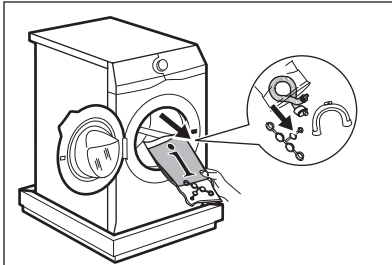
2. Remove the cardboard top and the polystyrene packaging materials.



3. Remove the internal film.

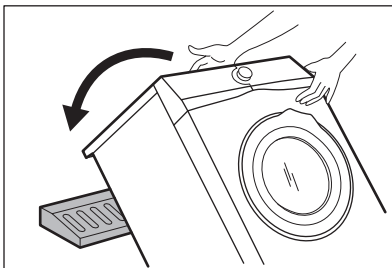


4. Open the door and remove the polystyrene piece from the door seal and all the items from the drum.

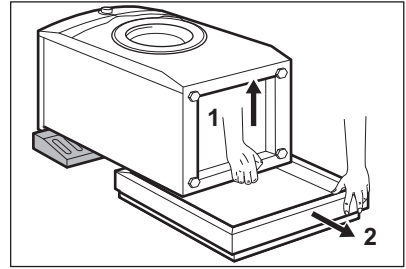


5. Carefully put down the appliance with the rear side on it.  
6. Put the front polystyrene packaging element on the floor under the appliance.

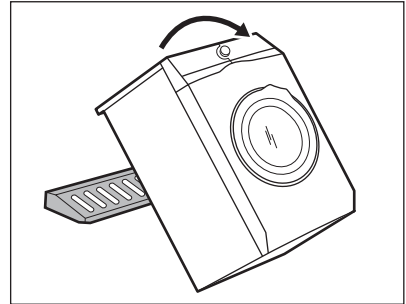
**i** Make sure not to damage the hoses.



7. Remove the polystyrene protection from the bottom.

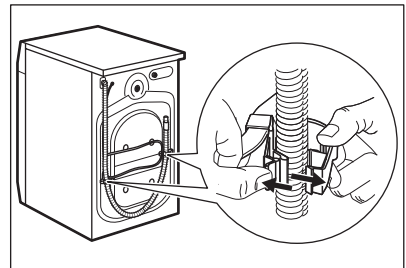


8. Pull up the appliance in vertical position.

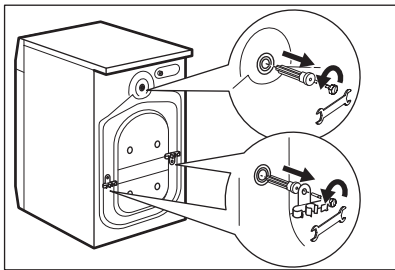


9. Remove the power supply cable and the drain hose from the hose holders.

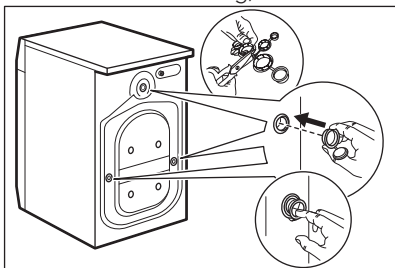
**i** It is possible to see water flowing from the drain hose. This is due to the testing with water of the appliance in factory.



10. Remove the three bolts by using the key supplied with the appliance.



11. Pull out the plastic spacers.
12. Put the plastic caps, that you find in the user manual bag, in the holes.

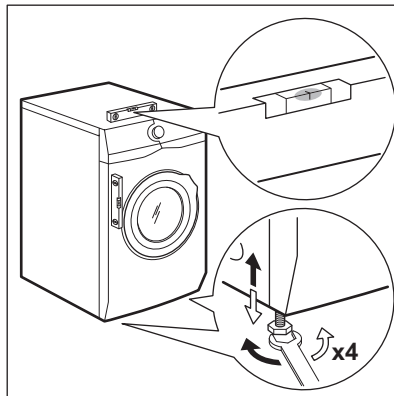


- i** We recommend that you keep the packaging and the transit bolts for any movement of the appliance.

### 3.2 Positioning and levelling

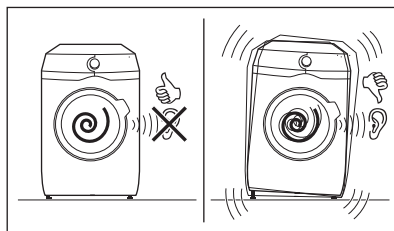
1. Install the appliance on a flat hard floor.
- i** Make sure that carpets do not stop the air circulation below the appliance. Make sure that the appliance does not touch the wall or other units.
2. Loosen or tighten the feet to adjust the level.

- !** **WARNING!**  
Do not put cardboard, wood or equivalent materials below the appliance feet to adjust the level.



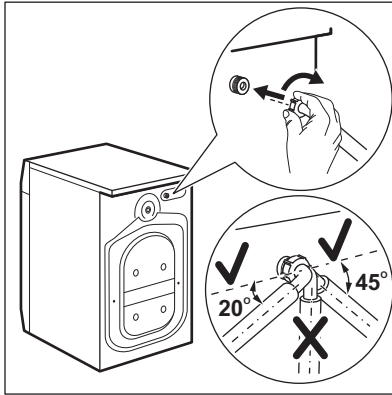
The appliance must be level and stable.

- i** A correct adjustment of the appliance level prevents the vibration, noise and the movement of the appliance when in operation.

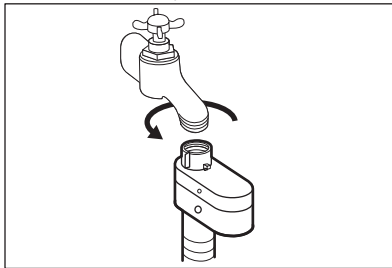


### 3.3 The inlet hose

1. Connect the water inlet hose to the back of the appliance.
2. Position it toward left or right depending on the position of the water tap.



- i** Make sure that the inlet hose is not in vertical position.
3. If necessary, loose the ring nut to set it in the correct position.
  4. Connect the water inlet hose to the cold water tap with 3/4 thread.



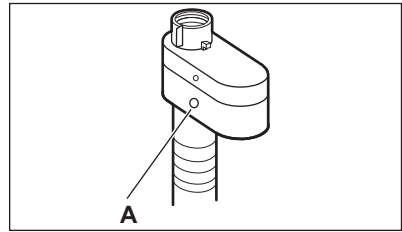
**!** **CAUTION!**  
Make sure that there are no leaks from the couplings.

**i** Do not use an extension hose if the inlet hose is too short. Contact the service centre for the replacement of the inlet hose.

### 3.4 Water-stop device

The inlet hose has a water stop device. This device prevents water leaks in the hose because of its natural ageing.

The red sector in the window «A» shows this fault.



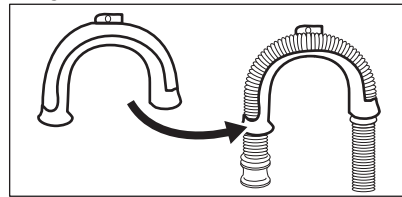
If this occur, close the water tap and contact the authorized service centre to replace the hose.

### 3.5 Water drainage

The drain hose should stay at a height of not less than 60 cm and not more than 100 cm.

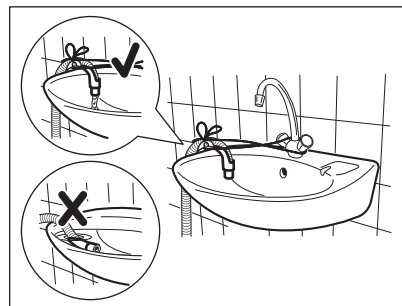
It is possible to connect the drain hose in different ways:

1. Make a U shape with the drain hose and put it around the plastic hose guide.



2. **On the edge of a sink** - Fasten the guide to the water tap or to the wall.

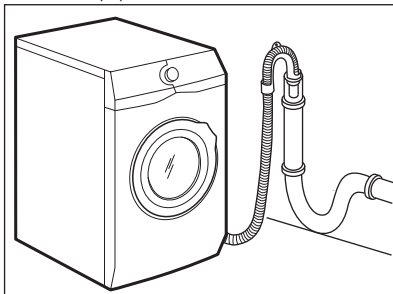
**i** Make sure that the plastic guide cannot move when the appliance drains.





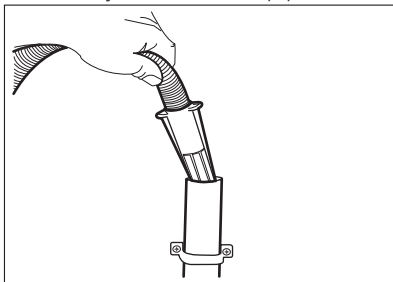
- i** Make sure that the drain hose end is not immersed in the water. There may be a return of dirty water into the appliance.

- 3. To a stand pipe with vent-hole -**  
Insert the drain hose directly into a drain pipe. Refer to the illustration.

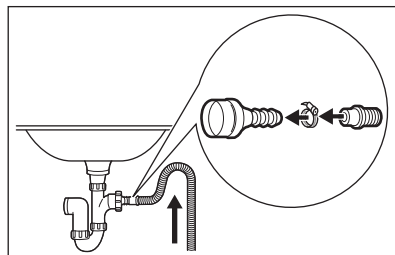


- i** The end of the drain hose must always be ventilated, i.e. the inner diameter of the drain pipe (min. 38 mm - min. 1.5) must be larger than the external diameter of the drain hose.

- 4.** If the end of the drain hose looks like this (see the picture), you can push it directly into the stand pipe.

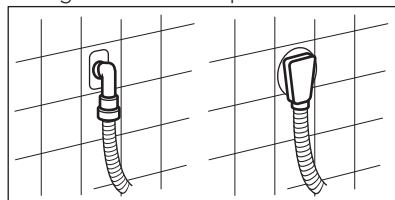


- 5.** Without the plastic hose guide: Put the drain hose in the spigot and tighten it with a clip. Refer to the illustration.



- i** Make sure that the drain hose makes a loop to prevent particles going into the appliance from the sink.

- 6.** Position the hose directly to a built-in drain pipe in the room wall and tighten it with a clip.



You can extend the drain hose to maximum 400 cm. Contact the authorized service centre for the other drain hose and the extension.

## 4. PRODUCT DESCRIPTION

### 4.1 Special features

Your new washing machine meets all modern requirements for an effective treatment of laundry with low water, energy and detergent consumption and respectful of fabric care.

- The **ProSense technology** detects the laundry amount defining the programme duration in 30 seconds.

The washing programme is tailored to the laundry load and the type of fabric without consuming more time, energy and water than necessary.

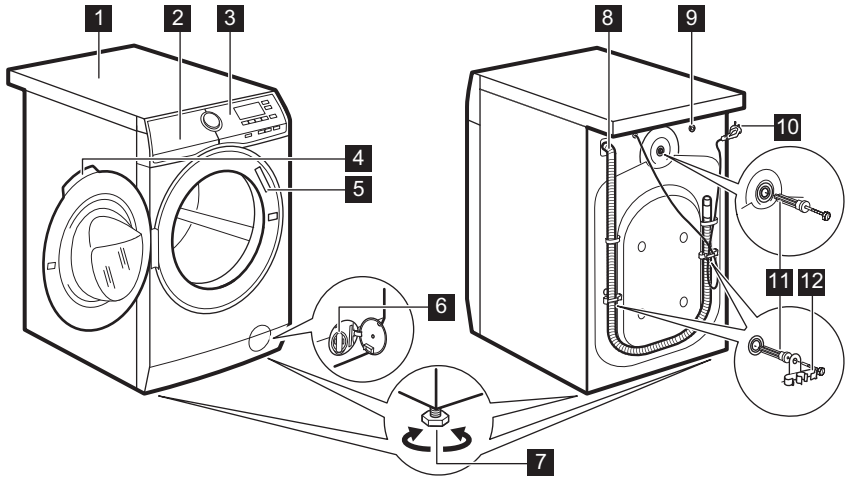
- The steam as a quick and easy way to refresh the clothes. The gentle steam programmes remove odours and reduce creases in dry fabrics so they need little ironing.

The **Pára plus option**, finishes every cycle with gentle steam that relaxes the fibres and reduces fabric creasing. Ironing will be easier!

- Thanks to the **Jemn + option**, the fabric softener is uniformly spread out

in the laundry and deeply penetrates the fabric fibres favouring a perfect softness.

## 4.2 Appliance overview

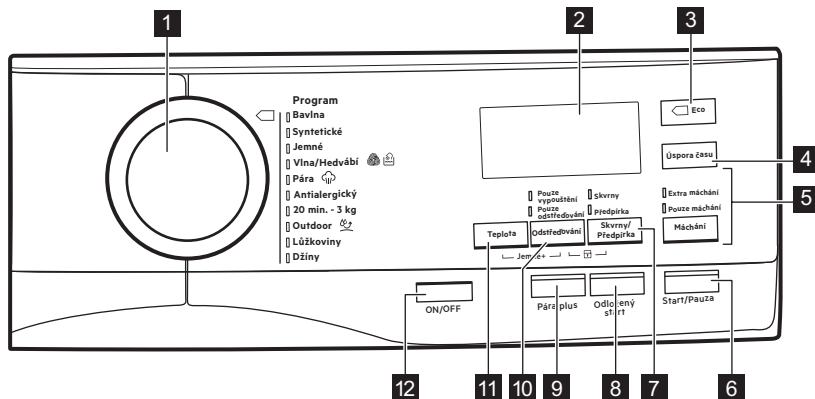


- 1** Worktop
- 2** Detergent dispenser
- 3** Control panel
- 4** Door handle
- 5** Rating plate
- 6** Drain pump filter
- 7** Feet for levelling the appliance

- 8** Drain hose
- 9** Inlet hose connection
- 10** Mains cable
- 11** Transit bolts
- 12** Hose support

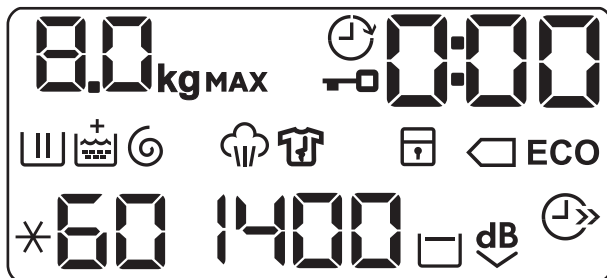
## 5. CONTROL PANEL

### 5.1 Control panel description






- 1** Programme dial
- 2** Display
- 3** Eco touch button (Eco)
- 4** Time saving touch button (Úspora času)
- 5** Rinse touch button (Máchání)
  - Extra rinse option (Extra máchání)
  - Skipping wash phase - Only Rinse option (Pouze máchání)
- 6** Start/Pause touch button (Start/Pauza)
- 7** Stain/Prewash touch button (Skrvny/Předpírka)
  - Stain option (Skrvny)
  - Prewash option (Předpírka)
- 8** Delay start touch button (Odložený start)
- 9** Steam Plus touch button (Pára plus)
- 10** Spin reduction touch button (Odstředování)
  - Rinse Hold option
  - Extra Silent option (dB)
  - Skipping wash and rinse phases - Only Spin option (Pouze odstředování)
  - Skipping wash, rinse and spin phases - Only Drain option (Pouze vypouštění)
- 11** Temperature touch button (Teplota)
- 12** On/Off push button (On/Off)

## 5.2 Display



	Maximum load indicator. The <b>kg</b> indicator flashes during the laundry load estimation (refer to ProSense load detection paragraph) .
<b>MAX</b>	Maximum laundry indicator. It blinks if the laundry amount exceeds the declared load.
	Door locked indicator.
	Delay start indicator.
	The digital indicator can show: <ul style="list-style-type: none"> <li>• Programme duration (e. g. <b>2:40</b>).</li> <li>• Delay time (e. g. <b>30'</b> or <b>2h</b>).</li> <li>• Cycle end ().</li> <li>• Warning code (e.g. <b>E20</b>).</li> </ul>
	Washing phase indicator. It flashes during pre-wash and wash phase.
	Rinsing phase indicator. It flashes during rinse phase.
	When the Soft Plus option is activated, the <b>+</b> indicator appears.
	Spinning and draining phase indicator. It flashes during spin and drain phase.
	Steam phase indicator.
	Anti-crease phase indicator.
	Child safety lock indicator.
	Energy saving indicators. The  indicator appears by selecting a programme for cotton at 40 °C or 60 °C.
	Time saving indicator.

1400	Spin speed indicator.
	Rinse hold indicator.
	Extra silent indicator.
88	Temperature indicator. The  indicator appears when a cold wash is set.

## 6. KNOB AND BUTTONS


### 6.1 On/Off

Pressing this button for a few seconds allows to activate or deactivate the appliance. Two different tunes sound while switching the appliance on or off.

As the Stand-by function automatically deactivates the appliance to decrease the energy consumption in a few cases, you may need to activate the appliance again.

For more details, refer to Stand-by paragraph in Daily Use chapter.



### 6.2 Introduction

-  The options/functions are not selectable with all washing programmes. Check the compatibility between options/functions and washing programmes in the "Programme Chart". An option/function can exclude another one, in this case the appliance doesn't allow you to set the incompatible options/functions together.

### 6.3 Teplota

When you select a washing programme, the appliance automatically proposes a default temperature.

Touch this button repeatedly until the desired temperature value appears on the display.


When the display shows the indicators  and , the appliance does not heat the water.

### 6.4 Odstředování


When you set a programme, the appliance automatically sets the maximum spin speed allowed.

Touch repeatedly this button to:


- **Decrease the spin speed.**

 The display shows only the spin speeds available for the set programme.


- **Activate the Rinse Hold option.**  
The final spin is not performed. The water of the last rinse is not drained out to prevent the fabrics from creasing. The washing programme ends with water in the drum.

The display shows the indicator . The door stays locked and the drum turns regularly to reduce creasing. You must drain the water to unlock the door.


If you touch the Start/Pauza button, the appliance performs the spinning phase and drains the water.

 The appliance empties the water out automatically after 18 hours approximately.




- **Activate the Extra Silent option.**  
The intermediate and the final spinning phases are suppressed and the programme ends with water in the drum. This helps to reduce creasing.

The display shows the indicator . The door stays locked. The drum turns regularly to reduce creasing. You must drain the water to unlock the door.



As the programme is very quiet, it is suitable for use at night time when cheaper electricity tariffs are available. In some programmes the rinses are performed with more water. If you touch the Start/Pauza button, the appliance performs the only draining phase.


 The appliance empties the water out automatically after 18 hours approximately.

- Pouze vypouštění option (**Skipping the wash, rinse and spin phases**) . The appliance performs the only draining phase of the selected washing programme.

The display shows the indicator  - - (cold), and the indicator  - - - (no spin) and the indicator .

- Pouze odstředování option (**Skipping the wash and rinse phases**) . The appliance performs only the spinning phase of the selected washing programme.


The display shows the indicator  - - (cold), the phase indicator  and the spin speed.


 If it is necessary to reduce the spin speed, select a programme with a lower spin speed as default.

## 6.5 Skvrny/Předpírka


Press this button repeatedly to activate one of the two options.

The relevant indicator goes on in the display.

- **Skvrny**  
Select this option to add an anti-stain phase to a programme in order to treat heavily soiled or stained laundry with stain remover. Pour the stain remover into compartment . The stain remover will be added in the appropriate phase of the washing programme.

 This option is not available with a temperature lower than 40 °C.


- **Předpírka**  
Use this option to add a pre-wash phase at 30 °C before the washing phase. This option is recommended for heavily soiled laundry, especially if containing sand, dust, mud and other solid particles.


 The options can increase the programme duration.




## 6.6 Pára plus


This option adds a steam phase followed by a short anti-crease phase at the end of the washing programme.

The steam phase reduces fabric creasing and facilitates the fabric ironing.

The indicator  flashes on the display during steam phase.

 This option increases the programme duration slightly.


When the programme stops the display shows a zero , the indicator  is steady on and the indicator  starts flashing. The drum performs smooth movements for about 30 minutes to keep the steam benefit. By touching any button the anti-crease movements stop and the door unlocks.

 A small laundry load helps to reach better results.

## 6.7 Odložený start

With this option you can delay the start of a programme in a more convenient time.

Touch repeatedly the button to set the required delay. The time increases by steps of 30 minutes up to 90' and from 2 hours up to 20 h.


After touching the Start/Pauza button, the display shows the indicator  and the

selected delay time and the appliance begins the countdown.

## 6.8 Máchání

With this button you can select one of the following options:

- Extra máchání option  
This option adds a few rinses according to the selected washing programme.  
Use this option for persons allergic to detergent residues and in areas where the water is soft.

 This option increases slightly the programme duration.

- Skipping wash phase - Pouze máchání option  
The appliance performs only the rinsing phase, the spinning and the draining phases of the selected programme.


The corresponding indicator above the touch button illuminates.

## 6.9 Úspora času

With this option you can decrease the programme duration.

- If your laundry is normally soiled, it may be advisable to shorten the washing programme. Touch this button **once** to decrease the duration.
- In case of smaller load, touch this button **twice** to set an extra quick programme.

The display shows the indicator .

 This option can also be used to shorten the Pára programme duration.

## 6.10 Eco

Set this option for slightly or normally soiled items washed at 30°C or higher temperatures.

The appliance decreases the washing temperature and extends the washing time to obtain a good washing efficiency by saving energy. The display shows the indicator **ECO**.

 If you select the Cotton programme at 40°C or 60°C, the display shows the indicator **ECO**; these are the standard cotton programmes, the most efficient programmes in terms of combined energy and water consumption.

## 6.11 Start/Pauza

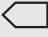



Touch the Start/Pauza button to start, pause the appliance or interrupt a running programme.

# 7. PROGRAMMES





## 7.1 Programme Chart

Washing programmes

Programme	Programme description
Washing programmes	

Programme	Programme description
Bavlna	<p><b>White cotton and coloured cotton.</b> Normal soil and light soil. <b>Standard programmes for the Energy Label consumption values.</b> According to regulation 1061/2010, the programme Bavlna at 60 °C and the programme Bavlna at 40 °C with the  option are respectively the «Standard 60°C cotton programme» and the «Standard 40°C cotton programme». They are the most efficient programmes in terms of combined energy and water consumption for washing normally soiled cotton laundry.</p> <p> The water temperature of the washing phase may differ from the temperature declared for the selected programme.</p>
Syntetické	<b>Synthetic items or mixed fabric items.</b> Normal soil.
Jemné	<b>Delicate fabrics such as acrylics, viscose, polyester items.</b> Normal soil.
 Vlna/Hedvábí	<b>Machine washable wool, hand washable wool and delicate fabrics</b> with «hand washing» care symbol. <sup>1)</sup>
<b>Steam programme</b>	
 Pára	<p><b>Steam programme for cotton and synthetic items.</b> Steam can be used for dried<sup>2)</sup>, washed or worn once laundry. This programme reduce creases and odours<sup>3)</sup> and relaxes the fibres. When the programme is completed, quickly remove the laundry from the drum. After a steam programme, ironing becomes effortless. Do not use any detergent. If necessary, remove stains by washing or using localized stain removal. Steam programmes do not perform any hygienic cycle. Do not set a Steam programme with these types of items:</p> <ul style="list-style-type: none"> <li>• Items that are not suitable for tumble drying.</li> <li>• All items with plastic, metal, wooden parts or alike.</li> </ul>
<b>Washing programmes</b>	
Antialergický	<p><b>White cotton items.</b> This programme removes micro-organisms thanks to a washing phase with the temperature maintained above 60°C for some minutes. This helps in removing germs, bacteria, micro-organism and particles. An additional rinsing phase ensures a proper removal of detergent residues and pollens/allergenic items. In this way the wash is more effective.</p>
20 min. - 3 kg	<b>Cotton and synthetic items</b> lightly soiled or once worn.



Programme	Programme description
 Outdoor	<p><b>Synthetic sport items.</b> This programme is designed to gently wash modern sports clothes such as gym, cycling or jogging clothes and similar outdoor items. The recommended laundry load is 2.5 kg.</p> <p> To reach better results, do not use fabric softener and make sure that there is no softener residue in the detergent dispenser.</p> <p><b>Waterproof, waterproof-breathable fabrics.</b> This programme can also be used as waterproof reviving cycle, specifically tailored for treating clothes with a hydrophobic coating, making them waterproof or more water resistant thanks to its impregnation action. To perform the proofing cycle, proceed as follows:</p> <ul style="list-style-type: none"> <li>• Pour a special waterproof cloth restorer in the drawer compartment for fabric softener .</li> <li>• Reduce the laundry load to 1 kg.</li> </ul> <p> To reach the best result with the waterproof reviving action, dry the laundry in a tumble dryer by setting the Outdoor drying programme.</p>
Lůžkoviny	<b>Single synthetic blanket, padded clothes, duvets, down jackets</b> and similar items.
Džíny	<b>Denim clothing and jersey items.</b> Normal soil. This programme performs a gentle rinsing phase, designed for denim, that reduces fading and avoids washing powder residues on the fibres.

1) During this cycle the drum rotates slowly to ensure a gentle wash. It can seem that the drum doesn't rotate or doesn't rotate properly, but this is normal for this programme.



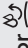


2) If you set a Steam programme with dried laundry, at the end of the cycle the laundry can be humid. Line dry the items for about 10 minutes.

3) Steam programme doesn't remove particularly intense odour.

Programme temperature, maximum spin speed and maximum load

Programme	Default temperature Temperature range	Maximum spin speed Spin speed range	Maximum load
<b>Washing programmes</b>			
Bavlna	40 °C 95 °C - Cold	1400 rpm 1400 rpm - 400 rpm	8 kg
Syntetické	40 °C 60 °C - Cold	1200 rpm 1200 rpm - 400 rpm	3 kg



	Bavlna	Syntetické	Jemné	Vlna/Hedvábní 	Pára 	Antialergický	20 min. - 3 kg	Outdoor 	Lůžkoviny	Džíny
Extra Silent 	■	■	■							
Pouze vypouštění	■	■	■	■		■		■		■
Pouze odstředování	■	■	■	■		■		■		■
Skvrny <sup>1)</sup>	■	■	■			■				■
Předpírka	■	■	■			■				■
Extra máchání	■	■	■			■				■
Pouze máchání	■	■	■	■		■	■	■	■	■
 ECO <sup>2)</sup>	■	■	■						■	■
Úspora času <sup>3)</sup>	■	■	■		■					■
Odložený start	■	■	■	■	■	■	■	■	■	■
Pára plus <sup>1)</sup>	■	■				■				■
Jemné+	■	■	■			■			■	■

<sup>1)</sup> This option is not available with temperature lower than 40 °C.

<sup>2)</sup> This option is not available with a temperature lower than 30 °C.

<sup>3)</sup> If you set the shortest duration, we recommend that you decrease the load size. It is possible to fully load the appliance, however the washing results can be less satisfactory.

## 7.2 Woolmark Apparel Care - Blue



Company for the washing of wool garments labelled as «hand wash» provided that the garments are washed according to the instructions issued by the manufacturer of this washing machine. Follow the garment care label for drying and other laundry instructions. M1623


In UK, Eire, Hong Kong and India the Woolmark symbol is a certification trademark.

The wool wash cycle of this machine has been approved by The Woolmark

## 8. SETTINGS

### 8.1 Child Lock

With this option you can prevent that the children play with the control panel.

- To **activate/deactivate** this option, touch the Skvrny/Předpírka and the Odstředování buttons simultaneously until the indicator  **comes on/goes off** on the display.

You can activate this option:

- After you touch the Start/Pauza button: all the buttons and the programme dial are deactivated (except On/Off button).
- Before you touch the Start/Pauza button: the appliance cannot start.

The appliance keeps the selection of this option after you switch it off.

### 8.2 Acoustic signals

This appliance is provided with different acoustic signals, that operate when:

- You activate the appliance (special short tune).
- You deactivate the appliance (special short tune).
- You touch the buttons (click sound).
- You make a wrong selection (3 short sounds).
- The programme is completed (sequence of sounds for about 2 minutes).
- The appliance has a malfunction (sequence of short sounds for about 5 minutes).

To **deactivate/activate** the acoustic signals, touch the Skvrny/Předpírka and the Odložený start buttons simultaneously for about 6 seconds.



If you deactivate the acoustic signals, they continue operate when the appliance has a malfunction.

### 8.3 Permanent Extra Rinse

With this option you can permanently have an extra rinse when you set a new programme.



- To **activate/deactivate** this option touch the Máchání button and the Skvrny/Předpírka button simultaneously until the indicator of the Extra máchání button **comes on/goes off**.

### 8.4 Jemné+


Set the Jemné+ option to optimise the fabric softener distribution and improve the fabric softness.




This option increases slightly the programme duration.

To **activate/deactivate** this option touch the Teplota button and the Odstředování button simultaneously until the  indicator **comes on/goes off** above the  indicator.

## 9. BEFORE FIRST USE

1. Make sure that all transit bolts have been removed from the appliance.
2. Make sure that the electrical power is available and the water tap is open.
3. Pour 2 litres of water into the detergent compartment marked by .

This action activates the drain system.

4. Pour a small quantity of detergent into the compartment marked by .
5. Set and start a programme for cotton at the highest temperature without any laundry in the drum.

This removes all possible dirt from the drum and the tub.

## 10. DAILY USE



**WARNING!**  
Refer to Safety chapters.

### 10.1 Activating the appliance

1. Connect the mains plug to the mains socket.
2. Open the water tap.
3. Press the On/Off button for a few seconds to activate the appliance.

A short tune sounds (if activated). The programme dial is automatically set on Cotton programme .

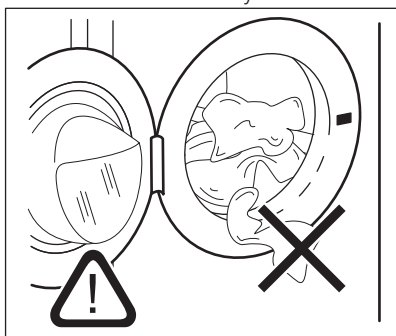
The display shows the maximum load, the default temperature, the maximum spin speed, the indicators of the phases making up the programme and the cycle duration.

### 10.2 Loading the laundry

1. Open the appliance door.
2. Put the laundry in the drum, one item at a time.
3. Shake the items before you put them in the appliance.

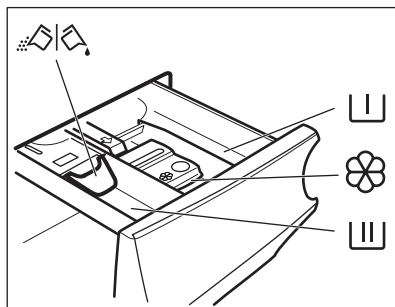
Make sure not to put too much laundry in the drum.





4. Close the door firmly.



**CAUTION!**  
Make sure that no laundry stays between the seal and the door. There is a risk of water leakage or damage to the laundry.

### 10.3 Filling the detergent and additives



-  Compartment for prewash phase, soak programme or stain remover.
-  Compartment for washing phase.
-  Compartment for liquid additives (fabric conditioner, starch).
- MAX** Maximum level for quantity of liquid additives.
-  Flap for powder or liquid detergent.



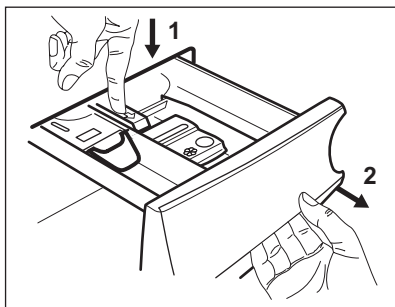
Always follow the instructions that you find on the packaging of the detergent products, but we recommend that you do not exceed the maximum indicated level (**MAX**). This quantity will however guarantee the best washing results.



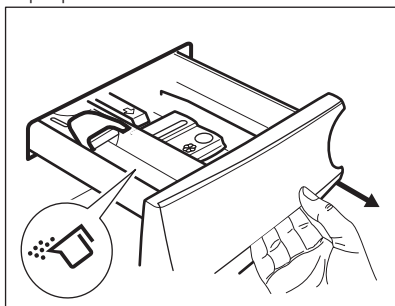
After a washing cycle, if necessary, remove any detergent residue from the detergent dispenser.

### 10.4 Check the position of the flap

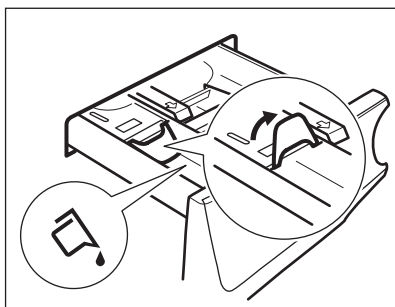
1. Pull out the detergent dispenser until it stops.
2. Press the lever down to remove the dispenser.



3. To use powder detergent, turn the flap up.



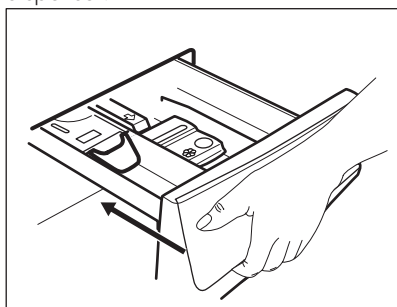
4. To use liquid detergent, turn the flap down.



**With the flap in the position DOWN:**

- Do not use gelatinous or thick liquid detergents.
- Do not put more liquid detergent than the limit shown on in the flap.
- Do not set the prewash phase.
- Do not set the delay start function.

5. Measure out the detergent and the fabric conditioner.
6. Carefully close the detergent dispenser.



Make sure that the flap does not cause a blockage when you close the drawer.


## 10.5 Setting a programme

1. Turn the programme dial to select the desired washing programme. The related programme indicator comes on.

The indicator of the Start/Pauza button flashes.

The display shows the maximum declared load for the programme, the default temperature, the maximum spin speed, the washing phase indicators (when available) and an indicative programme duration.

2. To change the temperature and/or the spin speed, touch the related buttons.
3. If desired, set one or more options by touching the related buttons. The related indicators come on in the display and the given information changes accordingly.

-  In case a selection is **not possible**, no indicator comes on and an acoustic signal sounds.

## 10.6 Starting a programme


Touch the Start/Pauza button to start the programme.

The related indicator stops flashing and stays on.


In the display, the indicator of the operating phase starts flashing and the maximum load indicator goes off.

The programme starts, the door is locked. The display shows the indicator




-  The drain pump can operate shortly before the appliance fills water.

## 10.7 Starting a programme with the delay start

1. Touch the Odložený start button repeatedly until the display shows the desired delay time. The indicator  comes on.


2. Touch the Start/Pauza button. The appliance starts the countdown of the delay start.

When the countdown is completed, the programme starts.

-  The PROSENSE estimation starts at the end of the countdown.

## Cancelling the delay start after the countdown has started

To cancel the delay start:


1. Touch the Start/Pauza button to pause the appliance. The related indicator flashes.
2. Touch the Odložený start button repeatedly until the display shows .
3. Touch the Start/Pauza button again to start the programme immediately.


## Changing the delay start after the countdown has started



To change the delay start:

1. Touch the Start/Pauza button to pause the appliance. The related indicator flashes.
2. Touch the Odložený start button repeatedly until the display shows the desired delay time.
3. Touch the Start/Pauza button again to start the new countdown.

## 10.8 The ProSense load detection

-  The programme duration in the display is referred to a **medium/high load**.

After touching the Start/Pauza button, the maximum declared load indicator goes off, the indicator  flashes, the ProSense starts the laundry load detection:

1. The appliance detects the load in the first 30 seconds: the indicator **kg** and the time dots  flash, the drum rotates shortly.
2. At the end of the load detection, the indicator **kg** goes off and the time dots  stop flashing. The programme duration will be adjusted accordingly and could increase or decrease. After further 30 seconds, the water filling starts.

At the end of the load detection, **in case of drum overload**, the indicator **MAX** is flashing in the display:

In this case, for 30 seconds, it is possible to pause the appliance and remove the exceeding garments.

Once removed the exceeding garments, touch the Start/Pauza button to start the programme again. The ProSense phase can be repeated up to three times (see point 1).

**Important!** If the laundry amount will not be reduced, the washing programme starts anyway, despite the overload. In

this case, it will be not possible to guarantee the best washing results.


**i** About 20 minutes after the programme start, the programme duration could be adjusted depending on the capacity of water absorption of the fabrics.

**i** The ProSense detection is carried out with complete washing programmes only (no skipping phase selected).


## 10.9 Programme phase indicators

When the programme starts the indicator of the running phase flashes and the other phase indicators are steady on.


E.g. the washing or pre wash phase is

running: 

When the phase ends the relevant indicator stops flashing and is steady on. The next phase indicator starts flashing.

E.g. the rinse phase is running: 

If you select the Pára plus the steam phase indicators come on.

The steam phase is running: 

The anti-crease phase is running:



## 10.10 Interrupting a programme and changing the options

When the programme is running, you can change only some options:

1. Touch the button Start/Pauza. The related indicator flashes.
2. Change the options. The given information in the display changes accordingly.
3. Touch the button Start/Pauza again. The washing programme continues.

## 10.11 Cancelling a running programme

1. Press the button On/Off to cancel the programme and to deactivate the appliance.
2. Press the button On/Off again to activate the appliance.

Now, you can set a new washing programme.

**i** If the ProSense phase is already carried out and the water filling is already started, the new programme starts **without repeating the ProSense phase**. The water and the detergent are not drained out in order to avoid waste. The display shows the maximum duration of the programme, updating it about 20 minutes after the starting of the new programme.

## 10.12 Opening the door

**i** If the temperature and level of the water in the drum are too high and/or the drum still rotates you cannot open the door.

While a programme or the delay start operates, the appliance door is locked.


1. Touch the button Start/Pauza. In the display the related door lock indicator goes off.
2. Open the appliance door. if necessary, add or remove the items.
3. Close the door and touch the button Start/Pauza.

The programme or the delay start continues.


## 10.13 End of the programme

When the programme has finished, the appliance stops automatically. The acoustic signals operate (if they are active).




In the display all washing phase indicators become steady and the time area shows .

The indicator of the Start/Pauza button goes off.

The door unlocks and the indicator  goes off.






1. Press the On/Off button to deactivate the appliance. After five minutes from the end of the programme, the energy saving function automatically deactivates the appliance.



 When you activate the appliance again, the display show the end of the last selected programme. Turn the programme dial to set a new cycle.


2. Remove the laundry from the appliance.
3. Make sure that the drum is empty.
4. Keep the door and the detergent dispenser slightly ajar to prevent mildew and odours.
5. Close the water tap.


## 10.14 Draining water out after end of cycle


If you have chosen a programme or an option that does not empty out the water of the last rinse, the programme is completed, but:

- The display shows the indicator , the option indicator  or  and the door locked indicator . The indicator of the running phase  flashes.
- The drum still turns at regular intervals to prevent the creases in the laundry.
- The door stays locked.
- You must drain the water to open the door:

1. If necessary, touch the Odstředování button to decrease the spin speed proposed by the appliance.
2. Touch the Start/Pauza button:
  - If you have set , the appliance drains the water and spins.
  - If you have set , the appliance only drains the water.

The option indicator  or  goes out, while the indicator  flashes and then goes off.


3. When the programme is completed and the door locked indicator  goes off, you can open the door.
4. Press the On/Off button a few seconds to deactivate the appliance.

 In any case, the appliance empties the water out automatically after approximately 18 hours.

## 10.15 Stand-by option

The Stand-by function automatically deactivates the appliance to decrease the energy consumption when:

- You do not use the appliance for 5 minutes before you touch the Start/Pauza button. Press the button On/Off to activate the appliance again.
- After 5 minutes from the end of the washing programme Press the On/Off button to activate the appliance again. The display shows the end of the last set programme. Turn the programme dial to set a new cycle.

 If you set a programme or an option that ends with water in the drum, the Stand-by function **doesn't deactivate** the appliance to remind you to drain the water.

# 11. HINTS AND TIPS



**WARNING!**  
Refer to Safety chapters.

## 11.1 The laundry load

- Divide the laundry into: white, coloured, synthetics, delicates and wool.
- Follow the washing instructions on the laundry care labels.
- Do not wash white and coloured items together.
- Some coloured items can discolour with the first wash. We recommend that you wash them separately for the first couple of times.
- Button up pillowcases, close zippers, hooks and poppers. Tie up belts.
- Empty pockets and unfold.
- Turn multilayered fabrics, wool and items with printed illustrations inside out.
- Pre-treat tough stains.
- Wash heavy soil stains with a special detergent.
- Be careful with curtains. Remove the hooks and put the curtains in a washing bag or pillowcase.
- Do not wash laundry without hems or with cuts. Use a washing bag to wash small and/or delicate items (e.g. underwired bras, belts, tights, etc. ).
- A very small load can cause balance problems with the spin phase leading to excessive vibration. If this occurs:
  - a. interrupt the programme and open the door (refer to "Opening the door when a programme or the delay start operates");
  - b. manually redistribute the load so that the items are spaced evenly around the tub;
  - c. press the Start/Pauza button. The spin phase continues.

## 11.2 Stubborn stains

For some stains, water and detergent is not sufficient.

We recommend that you pre-treat these stains before you put the items in the appliance.

Special stain removers are available. Use the special stain remover that is applicable to the type of stain and fabric.

## 11.3 Detergents and other treatments

- Only use detergents and other treatments specially made for washing machines:
  - powder detergents for all types of fabric,
  - powder detergents for delicate fabrics (40 °C max) and woollens,
  - liquid detergents, preferably for low temperature wash programmes (60 °C max) for all types of fabric, or special ones for woollens only.
- Do not mix different types of detergents.
- To help the environment, do not use more than the recommended quantity of detergent.
- Follow the instructions that you find on the on packaging of these products without exceeding the indicated maximum level (**MAX**).
- Use the recommended products for the type and colour of the fabric, the programme temperature and the level of soil.

## 11.4 Ecological hints

- Set a programme without the prewash phase to wash laundry with normal soil.
- Always start a washing programme with the maximum load of laundry allowed.
- If you pre-treat the stains, you can use a stain remover when you set a programme with a low temperature.
- To use the correct quantity of detergent, check the water hardness of your domestic system. Refer to "Water hardness".

## 11.5 Water hardness

If the water hardness in your area is high or moderate, we recommend that you use a water softener for washing machines. In areas where the water hardness is soft it is not necessary to use a water softener.

To find out the water hardness in your area, contact your local water authority.

Use the correct quantity of water softener. Follow the instructions that you find on the packaging of the product.

## 12. CARE AND CLEANING



**WARNING!**  
Refer to Safety chapters.

### 12.1 External cleaning

Clean the appliance with mild soap and warm water only. Fully dry all the surfaces.



**CAUTION!**  
Do not use alcohol, solvents or chemical products.

### 12.2 Descaling



If the water hardness in your area is high or moderate, we recommend that you use a water descaling product for washing machines.

Regularly examine the drum to check any limescale.

The regular detergents already contain water softening agents, but we recommend to run a cycle with empty drum and a descaling product occasionally.



Always follow the instructions that you find on the packaging of the product.

### 12.3 Maintenance wash

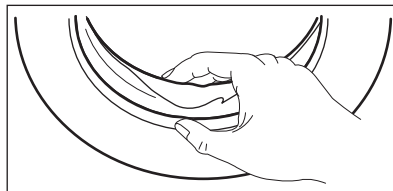
The repeated and prolonged use of low temperature programmes can cause detergent deposits, fluff residues, bacterial growth and biofilm formation inside the drum and the tub. This could generate bad odours and mildew.

To eliminate these deposits and hygienize the inner part of the appliance, run a maintenance wash regularly (at least once a month):

1. Remove all laundry from the drum.

2. Run a cotton programme with the highest temperature with a small quantity of powder detergent.

### 12.4 Door seal



Regularly examine the seal and remove all objects from the inner part.

### 12.5 Cleaning the drum

Regularly examine the drum to prevent rust particles.

For a complete cleaning:

1. Clean the drum with special products for stainless steel.



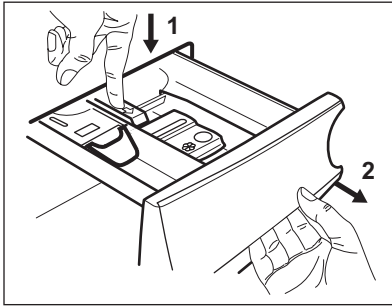
Always follow the instructions that you find on the packaging of the product.

2. Run a short cotton programme at high temperature with empty drum and with a small quantity of powder detergent, in order to rinse out any left residues.

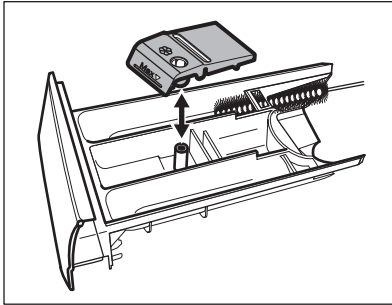
### 12.6 Cleaning the detergent dispenser

To prevent possible deposits of dried detergent or clotted fabric softener and/or formation of mould in the detergent dispenser drawer, once in a while carry out the following cleaning procedure:

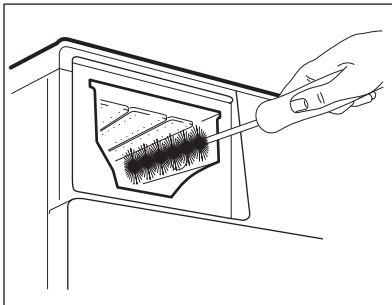
1. Open the drawer. Press the catch downwards as indicated in the picture and pull it out.



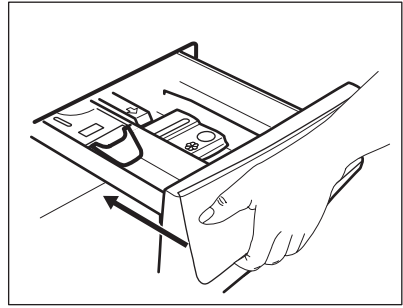
2. Remove the top part of the additive compartment to aid cleaning and flush it out under running warm water, to remove any traces of accumulated detergent. After cleaning, replace the top part in its position.



3. Make sure that all detergent residue is removed from the upper and lower part of the recess. Use a small brush to clean the recess.



4. Insert the detergent drawer into the guide rails and close it. Run the rinsing programme without any clothes in the drum.



## 12.7 Cleaning the drain pump



### WARNING!

Disconnect the mains plug from the mains socket.



Regularly check the drain pump filter and make sure that it is clean.

Clean the drain pump if:

- The appliance does not drain the water.
- The drum does not turn.
- The appliance makes an unusual noise because of the blockage of the drain pump.
- The display shows the alarm code **E20**.

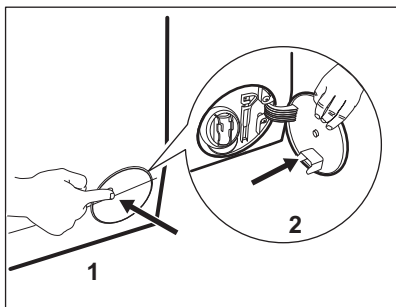


### WARNING!

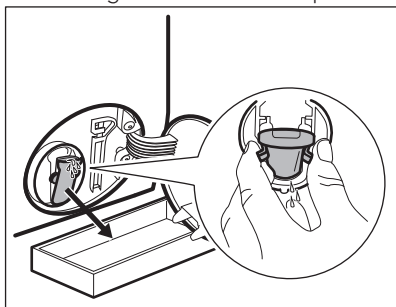
- Do not remove the filter while the appliance operates.
- Do not clean the pump if the water in the appliance is hot. Wait until the water cools down

**Proceed as follows to clean the pump:**

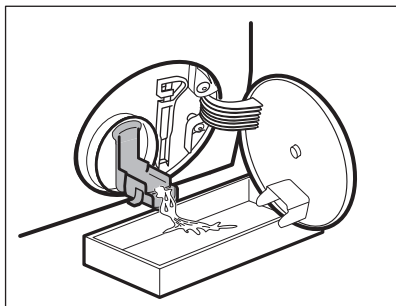
1. Open the pump cover.



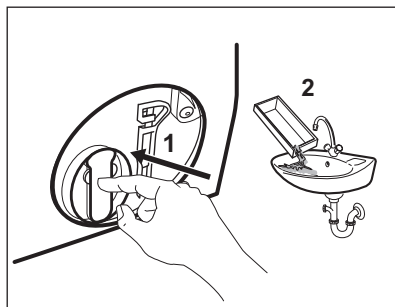
2. Place a suitable bowl below the drain pump access to collect the water that flows out.
3. Squeeze the two levers and pull the drainage duct forward to open it.



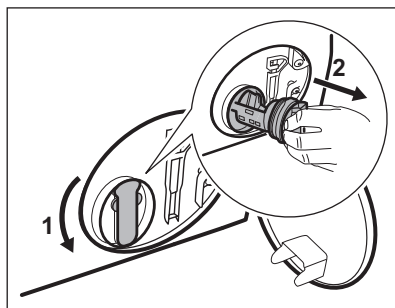
4. Let the water flow out.



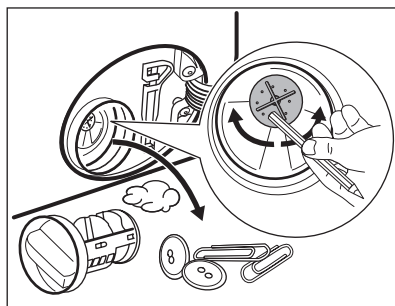
5. When the bowl is full of water, close the drainage duct back and empty the container.
6. Repeat the steps 4 and 5 until the water stops to flow out.



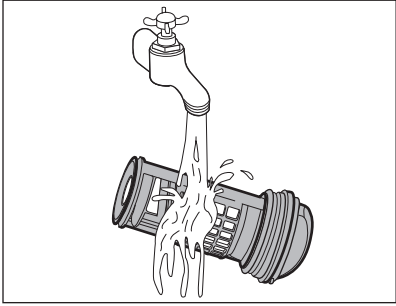
7. Close the drainage duct and turn the filter anti-clockwise to remove it.



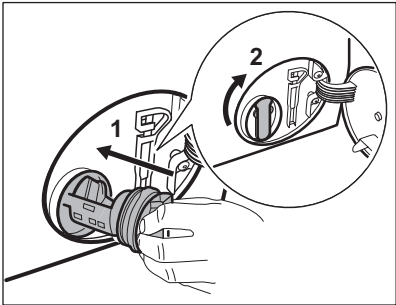
8. If it is necessary, remove fluff and objects from the filter recess.
9. Make sure that the impeller of the pump can rotate. If it does not rotate, contact the Authorised Service Centre.



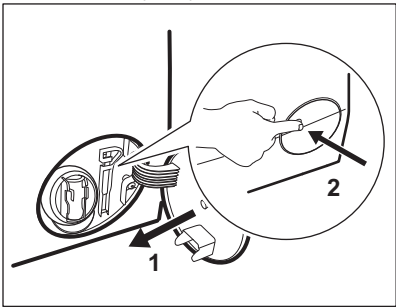
10. Clean the filter under the water tap.



- 11.** Put the filter back into the special guides by turning it clockwise. Make sure that you tighten the filter correctly to prevent leakages.



- 12.** Close the pump access.



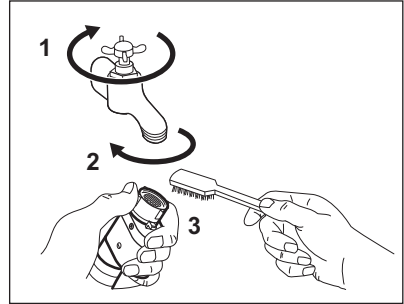
When you drain the water with the emergency drain procedure, you must activate the drain system again:

- a. Put 2 litres of water in the main wash compartment of the detergent dispenser.
- b. Start the programme to drain the water.

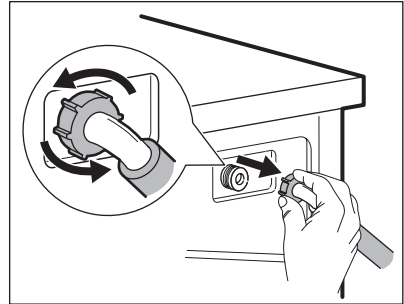
## 12.8 Cleaning the inlet hose and the valve filter

It is recommended to clean both the filters of the inlet hose and valve occasionally to remove any deposit, collected over the time:

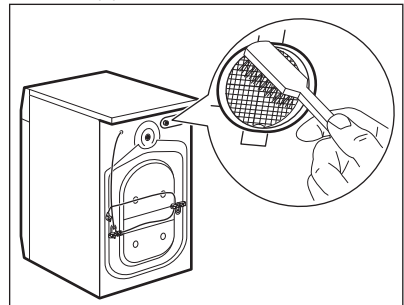
- 1.** Remove the inlet hose from the tap and clean the filter.



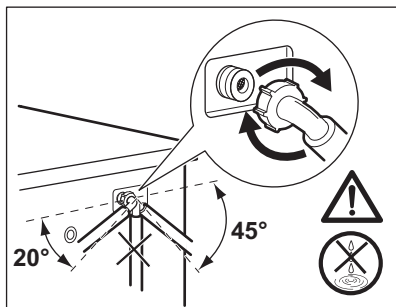
- 2.** Remove the inlet hose from the appliance by loosening the ring nut.



- 3.** Clean the valve filter on the back of the appliance with a toothbrush.



- 4.** When you reconnect the hose to the back of the appliance, turn it left or right (not in vertical position) depending on the position of your water tap.



## 12.9 Emergency drain

If the appliance cannot drain the water, carry out the same procedure, described in 'Cleaning the drain filter' paragraph. If necessary, clean the pump.

When you drain the water with the emergency drain procedure, you must activate the drain system again:

1. Put 2 litres of water in the main wash compartment of the detergent dispenser.
2. Start the programme to drain the water.

## 12.10 Frost precautions

If the appliance is installed in an area where the temperature can reach the values around 0° C or drop below, remove the remaining water from the inlet hose and the drain pump.

1. Disconnect the mains plug from the mains socket.
2. Close the water tap.
3. Put the two ends of the inlet hose in a container and let the water flow out of the hose.
4. Empty the drain pump. Refer to the emergency drain procedure.
5. When the drain pump is empty, install the inlet hose again.



### WARNING!

Make sure that the temperature is higher than 0 °C before you use the appliance again. The manufacturer is not responsible for damages caused by low temperatures.

# 13. TROUBLESHOOTING



**WARNING!**  
Refer to Safety chapters.

## 13.1 Introduction

The appliance does not start or it stops during operation.

First try to find a solution to the problem (refer to the table). If the problem persists, contact the Authorised Service Centre.

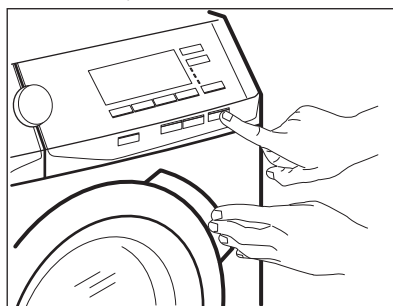
**In case of major problems, the acoustic signals operate, the display shows an alarm code and the Start/Pauza button may flash continuously:**

- **E10** - The appliance does not fill with water properly.
- **E20** - The appliance does not drain the water.
- **E40** - The appliance door is open or not closed correctly. Please check the door!



If the appliance is overloaded, remove some items from the drum and/or keep pressed the door while touching the Start/Pauza button until the indicator

— stops flashing (see the picture below).



- **E40** - The mains supply is unstable. Wait until the mains supply is stable.

- **E91** - No communication between electronic elements of the appliance. Switch it off and switch on again.
- **EFO** - The anti-flood device is on. Disconnect the appliance and close the water tap. Contact the Authorised Service Centre.



**WARNING!**  
Deactivate the appliance before carrying out any check.

## 13.2 Possible failures

Problem	Possible solution
The programme does not start.	Make sure that the mains plug is connected to the mains socket.
	Make sure that the appliance door is closed.
	Make sure that there is not a damaged fuse in the fuse box.
	Make sure that the Start/Pauza has been touched.
	If the delay start is set, cancel the setting or wait for the end of countdown.
The appliance does not fill with water properly.	Deactivate the Child Lock function, if it is on.
	Make sure that the water tap is open.
	Make sure that the pressure of the water supply is not too low. For this information, contact your local water authority.
	Make sure that the water tap is not clogged.
	Make sure that the filter of the inlet hose and the filter of the valve are not clogged. Refer to "Care and cleaning".
	Make sure that the inlet hose has no kinks or bends.
	Make sure that the coupling of the water inlet hose is correct.
	Make sure that the drain hose is in the correct position. The hose may be positioned too low (see 'Water drainage' paragraph).
The appliance does not drain the water.	Make sure that the sink spigot is not clogged.
	Make sure that the drain hose has no kinks or bends.
	Make sure that the drain filter is not clogged. Clean the filter, if necessary. Refer to 'Care and cleaning'.
	Make sure that the connection of the drain hose is correct.
	Set the drain programme if you set a programme without drain phase.



Problem	Possible solution
	Set the drain programme if you set an option which ends with water in the tub.
The spin phase does not operate or the washing cycle lasts longer than usual.	Set the spin programme.
	Make sure that the drain filter is not clogged. Clean the filter, if necessary. Refer to 'Care and cleaning'.
	Adjust manually the items in the tub and start the spin phase again. This problem may be caused by balance problems.
There is water on the floor.	Make sure that the couplings of the water hoses are tight and there is not water leakages.
	Make sure that the drain hose have no damages.
	Make sure you use the correct detergent and the correct quantity of it.
You cannot open the appliance door.	Make sure that a washing programme that ends with water in tub, has been selected.
	Make sure that the washing programme is finished.
	Set the drain or the spin programme if there is water in the drum.
	Make sure that the appliance receives electrical power.
	This problem may be caused by a failure of the appliance. Contact the Authorised Service Centre. If you need to open the door, please read carefully «Emergency door opening».
The appliance makes an unusual noise and vibrates.	Make sure the levelling of the appliance is correct. Refer to 'Installation'.
	Make sure that the packaging and/or the transit bolts are removed. Refer to 'Installation'.
	Add more laundry in the drum. The load may be too small.
The programme duration increases or decreases during programme execution.	The ProSense function is able to adjust the programme duration according to the type and the amount of the laundry. Refer to 'The ProSense function' in 'Daily Use' chapter.
The washing results are not satisfactory.	Increase the detergent quantity or use a different detergent.
	Use special products to remove the stubborn stains before you wash the laundry.

Problem	Possible solution
	Make sure that you set the correct temperature.
	Decrease the laundry load.
Too much foam in the drum during the washing cycle.	Reduce the quantity of detergent.
After the washing cycle, there are some detergent residues in the dispenser drawer.	Make sure that the flap is in the correct position (UP for powder detergent - DOWN for liquid detergent). Make sure you have used the detergent dispenser according to the indications given in this user manual.

After the check, activate the appliance. The programme continues from the point of interruption.

If the problem occurs again, contact the Authorised Service Centre.

If the display shows other alarm codes. Deactivate and activate the appliance. If the problem continues, contact the Authorised Service Centre.

### 13.3 Emergency door opening

In case of power failure or functioning failure the appliance door remains locked. The washing programme continues when the power is restored. If the door remains locked in case of failure, it is possible to open it using the emergency unlock function.

Before opening the door:



**CAUTION!**  
**Risk of burns! Make sure that the water temperature is not too high and the laundry is not hot. If necessary, wait until they cool down.**



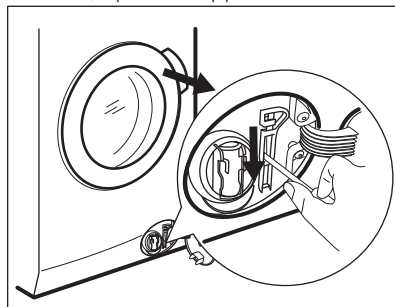
**CAUTION!**  
**Risk of injury! Make sure that the drum is not rotating. If necessary, wait until the drum stops rotating.**



**Make sure that the water level inside the drum is not too high. If necessary, proceed with an emergency drain (refer to «Emergency drain» in «Care and cleaning» chapter).**

To open the door, proceed as follows:

1. Press the On/Off button to switch the appliance off.
2. Disconnect the mains plug from the mains socket.
3. Open the filter flap.
4. Keep the emergency unlock trigger pulled downward and, at the same time, open the appliance door.



5. Take out the laundry and then close the appliance door.
6. Close the filter flap.

## 14. CONSUMPTION VALUES



The data in this table are approximate. Different variables can affect the data: the quantity and type of laundry, the water and ambient temperature.



During the washing programme, the Prosense technology can vary the wash duration and the consumption values. For more details see 'The Prosense load detection' paragraph in 'Daily Use' chapter.

Programmes	Load (kg)	Energy consumption (kWh)	Water consumption (litre)	Approximate programme duration (minutes)	Remaining moisture (%) <sup>1)</sup>
Bavlna 60°C	8	1.30	80	220	52
Bavlna 40°C	8	1.20	80	210	52
Syntetické 40°C	3	0.80	60	140	35
Jemné 40°C	3	0.60	60	120	35
Vlna/Hedvábí 30°C	1.5	0.30	60	75	30
<b>Standard cotton programmes</b>					
Standard 60°C cotton	8	0.68	54	228	52
Standard 60°C cotton	4	0.49	41	227	52
Standard 40°C cotton	4	0.46	42	228	52

<sup>1)</sup> At the end of spin phase.

Off Mode (W)	Left On Mode (W)
0.30	0.30

The information given in the chart above is compliant with the EU Commission regulation 1015/2010 implementing directive 2009/125/EC.

## 15. TECHNICAL DATA

Dimension	Width/ Height/ Depth/ Total depth	600 mm/ 850 mm/ 571 mm/ 600 mm
-----------	-----------------------------------	--------------------------------

Electrical connection	Voltage	230 V
	Overall power	2200 W
	Fuse	10 A
	Frequency	50 Hz
Level of protection against ingress of solid particles and moisture ensured by the protective cover, except where the low voltage equipment has no protection against moisture		IPX4
Water supply pressure	Minimum	0,5 bar (0,05 MPa)
	Maximum	8 bar (0,8 MPa)
Water supply <sup>1)</sup>		Cold water
Maximum Load	Cotton	8 kg
Energy Efficiency Class		A+++
Spin Speed	Maximum	1400 rpm

<sup>1)</sup> Connect the water inlet hose to a water tap with a 3/4" thread.

## 16. ACCESSORIES

### 16.1 Available in [www.aeg.com/shop](http://www.aeg.com/shop) or from authorised dealer

**i** Only appropriate accessories approved by AEG ensure the safety standards of the appliance. If unapproved parts are used, any claims will be invalidated.

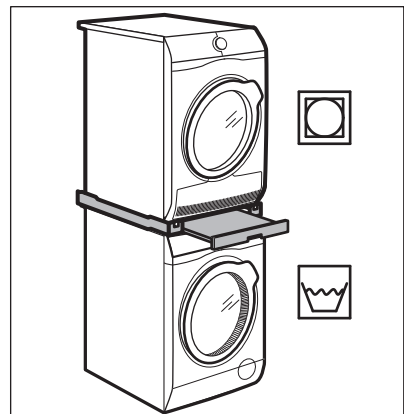
### 16.2 Connectivity

This washing machine has been prepared for connectivity. Register your washing machine at [www.registreaeg.com](http://www.registreaeg.com) to receive information when it will be possible to enable the connectivity functionality.

### 16.3 Fixing plate kit

If you install the appliance on a plinth, secure the appliance in the fixing plates. Read carefully the instructions supplied with the accessory.

### 16.4 Stacking kit



The tumble dryer can be stacked on the top of the washing machine **only by using the correct stacking kit manufactured and approved by AEG.**

**i** Verify the compatible stacking kit by checking the depth of your appliances.

The stacking kit can be used only with the appliances specified in the leaflet provided with the accessory.

Read carefully the instructions supplied with the appliance and with the accessory.

**WARNING!**

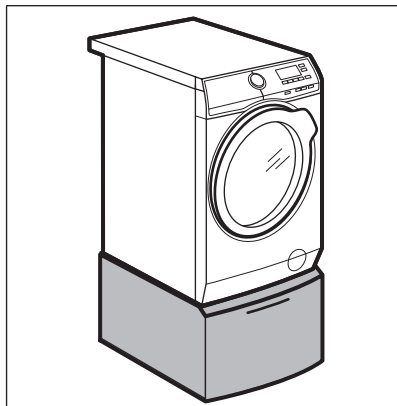
Do not put the tumble dryer under the washing machine.

To raise your appliance and makes loading and unloading laundry easier.


The drawer can be used for laundry storage e.g.: towels, cleaning products and more.


Read carefully the instructions supplied with the accessory.

## 16.5 Pedestal with the drawer



## 17. ENVIRONMENTAL CONCERNS

Recycle the materials with the symbol . Put the packaging in applicable containers to recycle it. Help protect the environment and human health and to recycle waste of electrical and electronic appliances. Do not dispose appliances

marked with the symbol  with the household waste. Return the product to your local recycling facility or contact your municipal office.





[www.aeg.com/shop](http://www.aeg.com/shop)



157001340-A-212016

**AEG**